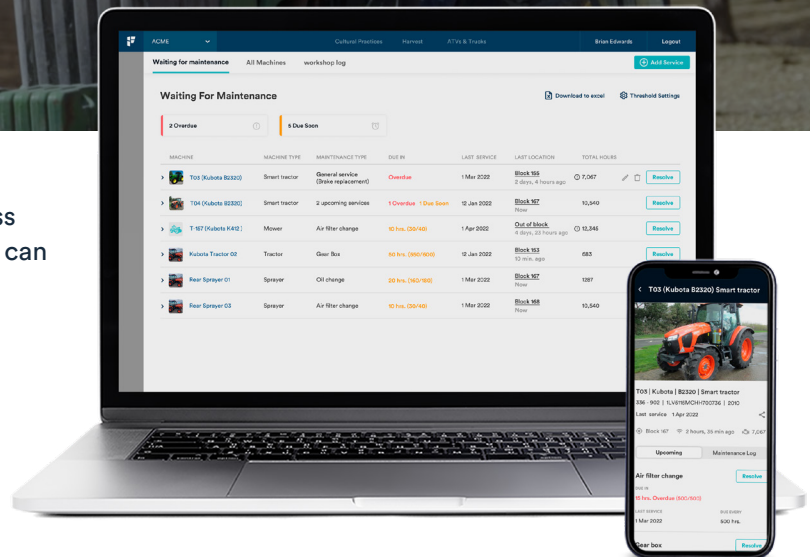


# Fleet Maintenance Module

Keep machines running at peak performance and minimize downtime

Managing maintenance schedules and services across large fleets of tractors, implements, trucks and ATVs can be challenging.

Fieldin's Fleet Maintenance Module automates engine hour tracking and service scheduling to optimize fleet health.



## Fieldin's Fleet Maintenance Module



### Simplify & eliminate gaps in service records

Remove unnecessary paperwork and spreadsheets by digitizing record-keeping activities.



### Works on any machine, make and model, including implements

Track and manage all of your machines and implements in a single dashboard.



### Go from reactive to proactive

Avoid unexpected machine downtime, and optimize service scheduling around operations.



### Keep teams safe and increase protection against liability

Have confidence that machines going into the field are in top working order.



### Protect your high-value investments

Extract the maximum value out of your equipment investments across your fleet.



### Manage equipment lifecycle

Make better informed decisions around retiring assets and investing in new equipment.



### More accurately track sustainability initiatives

Track, calculate, benchmark, and take action to improve machine emissions.

## Increase machine utilization to reduce overall machine costs per engine hour

When proper maintenance schedules are followed, you're able to extend the life of your machines and reduce the overall machine costs per engine hour (as broken down in the example shown). While you may spend more on regular maintenance across the life of the machine, you'll avoid the major, unplanned repairs that are particularly costly. At the same time, getting more utilization out of each machine can potentially enable fleet reduction, lowering total CapEx.

	Without PROPER MAINTENANCE	With PROPER MAINTENANCE
TRACTOR LIST PRICE	\$90,000	\$90,000
ANNUAL ENGINE HOURS	500 HRS	600 HRS
ECONOMIC LIFE OF TRACTOR	15 YRS	20 YRS
LIFETIME ENGINE HOURS	7,500 HRS	12,000 HRS
TOTAL MAINTENANCE COSTS	\$13,500	\$36,000
ADDITIONAL COSTS FOR MAJOR REPAIRS	\$20,000	\$5,000
TOTAL ACCUMULATED MAINTENANCE + REPAIR COSTS	\$33,500	\$41,000
MAINTENANCE + REPAIR COSTS PER ENGINE HOUR	\$4	\$3
MACHINE COSTS PER ENGINE HOUR (CAPEX)	\$16	\$11

Estimated maintenance costs based on study from Iowa State University: Estimating Farm Machinery Costs

## KEY FEATURES

### Automatically track engine hours

With Fieldin's smart sensors installed on your machines, engine hour logs are always up-to-date.

### View all of your equipment in a centralized dashboard

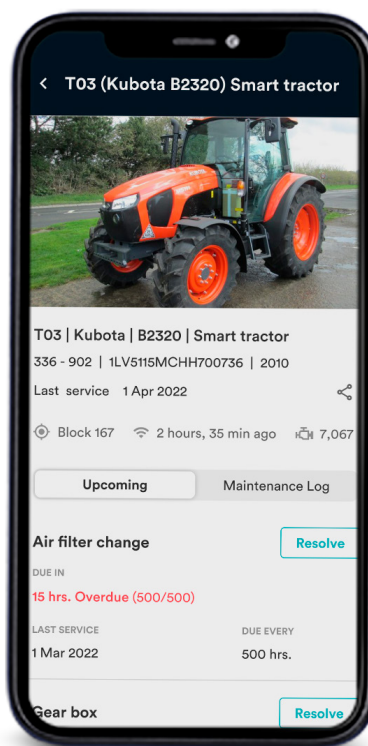
Easily access service records across your entire fleet - tractors, trucks, ATVs, mowers, backhoes, sprayers, etc.

### Drill down to individual machines

View engine hours, last location, detailed service history, and upcoming maintenance schedules.

### Mobile app with automated alerts

Set push notifications to send important reminders and alerts to the right people at the right time.



## Helping growers grow smarter.

Fieldin partners with high value crop growers to digitize their operations and build the autonomous farm of the future. Our innovative technology unlocks real-time insights for better visibility, accuracy, and efficiency, which improves business performance and ESG outcomes.

Schedule a demo: [fieldin.com/schedule-demo](https://fieldin.com/schedule-demo)

Fieldin.com | +1.559.246.1525 | sales@fieldin.com